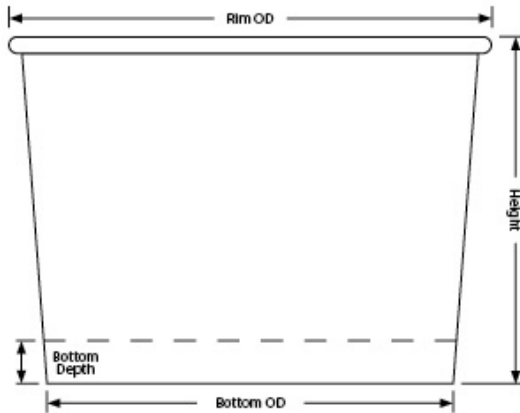




C92Q Short 20oz Container (2Q)

20oz 2Q Recycled Paper COLD Container



Capacity: 20.30oz / 599.80ml

Material: 17.5pt Recycled Paper, Poly 2-sides, 35% Sustana
EnviroLife Post-Consumer Recycled Fiber, FSC SFI
PEFC Certified

Minimum: 2,000 pieces

Height: 3.239" \pm .015

Rim Height: 0.150" \pm .010

Rim OD: 4.525" \pm .010

Bottom OD: 3.814" \pm .010

Bottom Depth: 0.400" \pm .010

Shipping: FOB NV Made in the USA

Short 20oz Container (2Q) available in [Cold Paper](#)

C92Q Standard Case Pack Configuration

Box Dimensions: 23.13"x18.60"x13.53"

Box Volume: 3.37 Cubic Feet

Box Weight: 18 lbs

Box Content: 500 Pieces

Pallet Dimensions: 40.00"x48.00"x86"

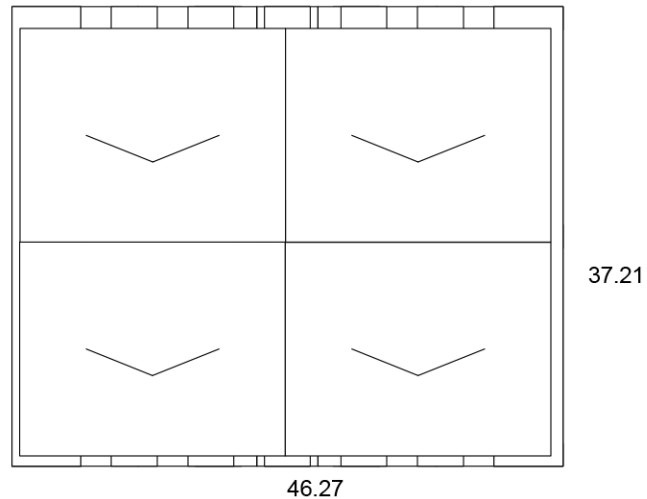
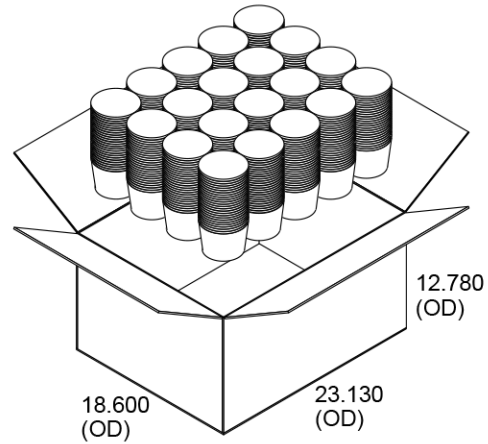
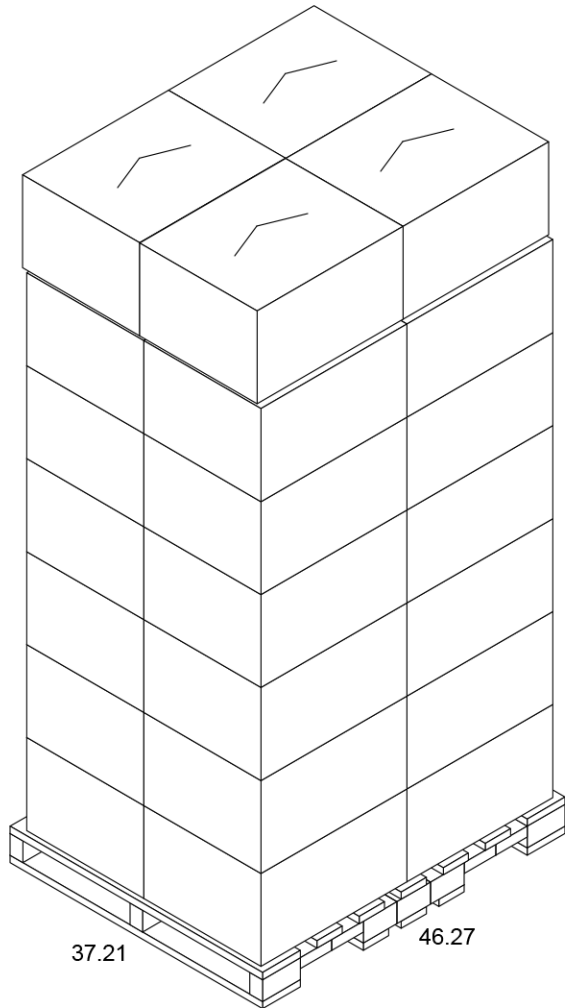
Pallet Weight: 477 lbs

Pallet Content: 12,000 Pieces / 24 Boxes

SEE LID OPTIONS ON LAST PAGE

Pallet for C92Q (Gloss), M92Q (Matte)

20oz 2Q Recycled Paper COLD Container





Lid Options for C92Q (Gloss), M92Q (Matte) 20oz 2Q Recycled Paper COLD Container



P2 Printed Snap-Fit Paper

- Hi-Definition, Full Color
- Customizable
- Seamlessly registered text
- Uninterrupted text
- Three week leadtime
- Case: 500 - 14 lbs



Reusable Basic Lids

- Reusable, injection molded
- Black & white standard
- With & without straw slot
- Case: 1,000 - 20 lbs



Clear Single-Use Lid

- Clear, thermo-formed
- With & without straw slot
- Case: 1,000 - 10 lbs



Clear U-Dome Lid

- Clear, thermo-formed
- Container fits in lid
- Case: 1,000 - 16 lbs



Deli/Soup Lid

- Black/white thermo-formed
- Vented lid
- Case: 1,000 - 12 lbs