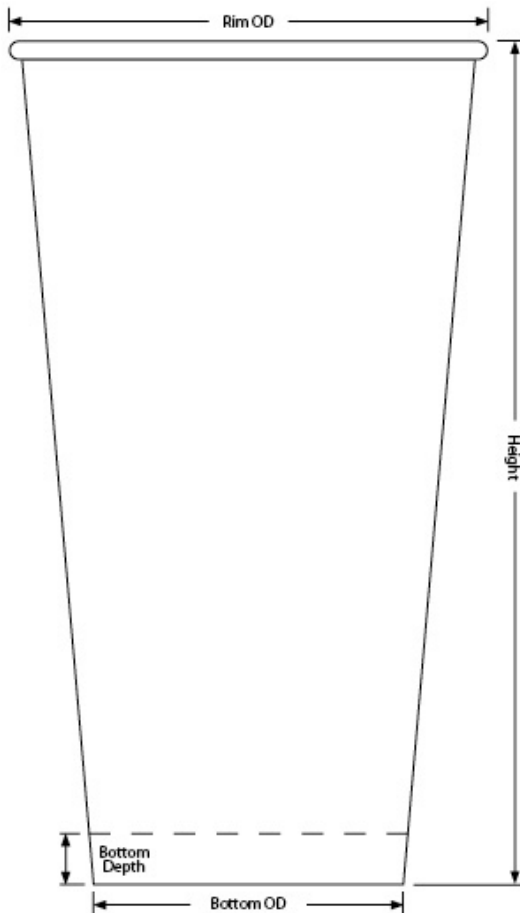




C932 32oz Drink Cup (32)

32oz Recycled Paper COLD Cup



Capacity: 32.56oz / 963.00ml

Material: 17.5pt Recycled Paper, Poly 2-sides, 35% Sustana
EnviroLife Post-Consumer Recycled Fiber, FSC SFI
PEFC Certified

Minimum: 2,000 pieces

Height: 7.269" \pm .015

Rim Height: 0.150" \pm .010

Rim OD: 4.124" \pm .010

Bottom OD: 2.665" \pm .010

Bottom Depth: 0.414" \pm .010

Shipping: FOB NV Made in the USA

32oz Drink Cup (32) available in [Cold Paper](#) [Clear Plastic](#)

C932 Standard Case Pack Configuration

Box Dimensions: 23.35"x15.75"x17.31"

Box Volume: 3.68 Cubic Feet

Box Weight: 27 lbs

Box Content: 500 Pieces

Pallet Dimensions: 40.00"x48.00"x92"

Pallet Weight: 720 lbs

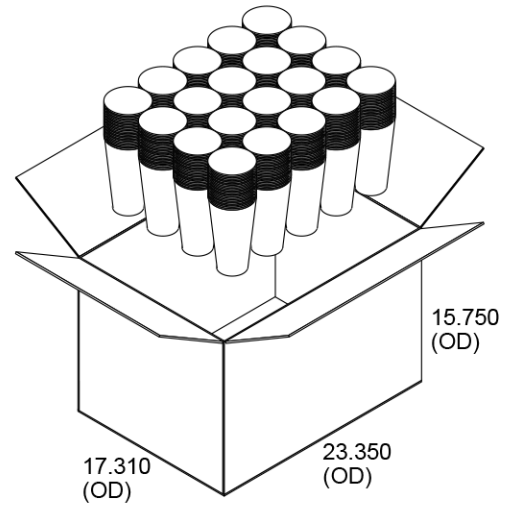
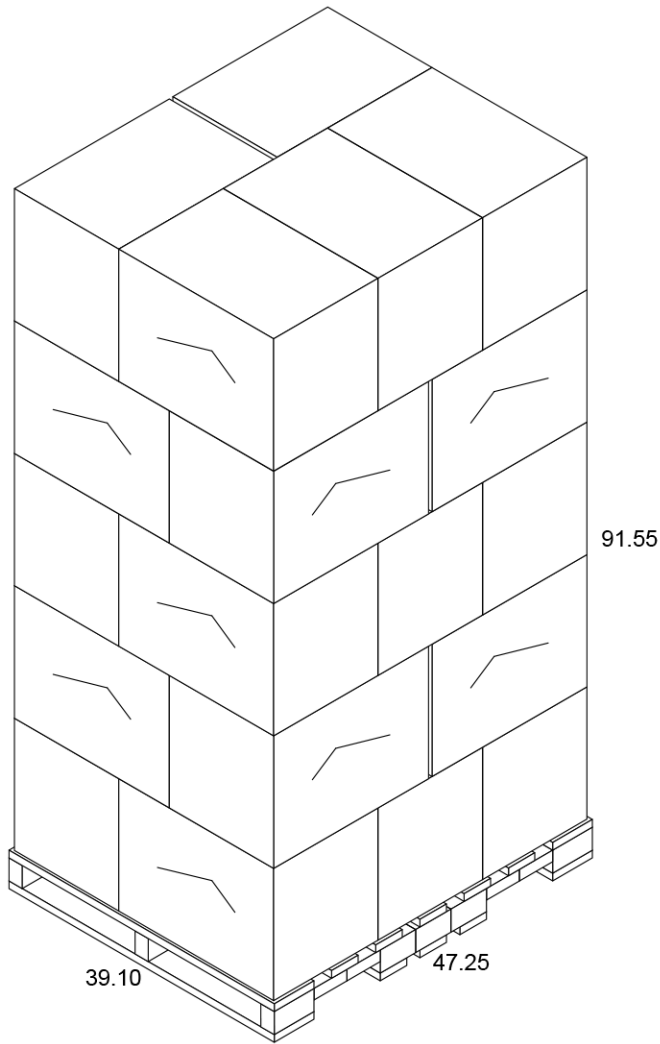
Pallet Content: 12,500 Pieces / 25 Boxes

SEE LID OPTIONS ON LAST PAGE

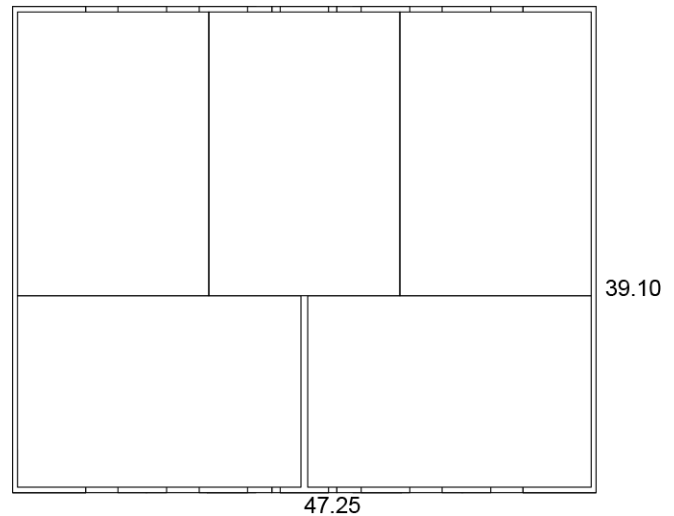
Pallet for C932 (Gloss), M932 (Matte)

32oz Recycled Paper COLD Cup

Pallet View



Top View





Lid Options for C932 (Gloss), M932 (Matte) 32oz Recycled Paper COLD Cup



Reusable Basic Lid

- Reusable, injection molded
- Black & white standard
- Available in red
- With straw slot
- Case: 1,000 - 19 lbs



Clear Single-Use Lid

- Clear, thermo-formed
- With & without straw slot
- Case: 1,000 - 9 lbs